

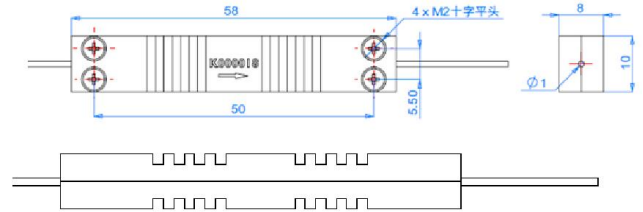
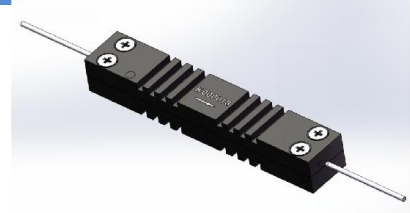
High Power Polarization Insensitive Isolator

Product Features

- High performance
- Low Insertion Loss
- High Return Loss

Product Applications

- Communication Systems
- Test Instrumentations
- EDFA
- transmitters



10W Isolator

Specifications

Parameter	Unit	Value	
		Single Stage	Dual Stage
Stage		Single Stage	Dual Stage
Center Wavelength	nm	1310, 1480 or 1550	
Operating Wavelength Range	nm	±20	
Typ. Peak Isolation	dB	42	58
Min. Isolation, at 23 °C	dB	28	48
Typ. Insertion Loss, λ c, 23 °C	dB	0.35	0.4
Max. Insertion Loss, at -5 °C - 70 °C	dB	0.5	0.55
Min. Return Loss (Input/Output)	dB	60/55	60/55
Max. Polarization Dependent Loss, 23 °C	dB	0.55	0.55
Max. Polarization Mode Dispersion		0.2	0.05
Max. Optical Power (CW)	W	1, 3, 5, 10 ,Specify	
Max. Tensile Load	N	5	
Fiber type		SMF-28 fiber	
package dimensions	mm	Φ5.5*35 or 58x10x8	
Operating Temperature	°C	-5 to +70	
Storage Temperature	°C	-40 to +85	

* Above specifications are for devices without connectors

* IL is 0.3 dB higher, RL is 5 dB lower for each connector added. Optical Power will be 1W only with connector added.

* for pulse application please contact us!

Ordering Information

HPII	Wavelength	stage	Handling power	Pigtail Type	Fiber Length	Connector
1x1	1310nm 1480nm 1550nm Specify	Single stage Dual stage	1W 3W 5W 10W	250um bare fiber 900um loose tube Specify	0.5m 1m 1.5m 2m Specify	N=None FC/APC FC/UPC SC/APC SC/UPC LC/UPC Specify